



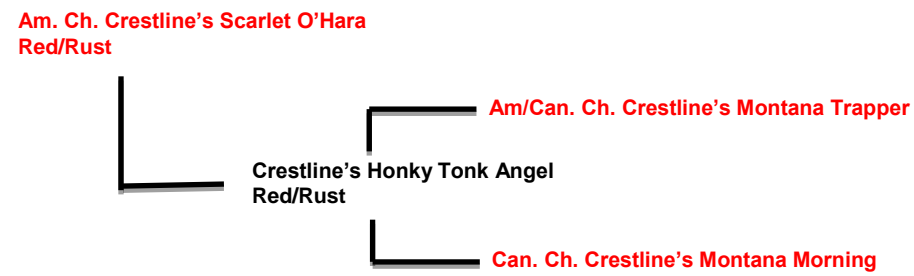
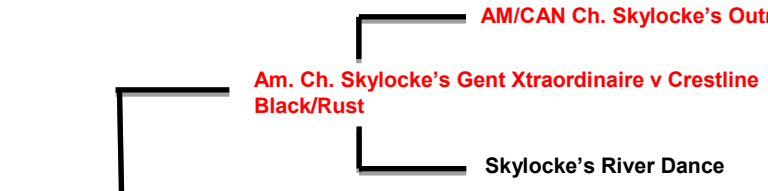
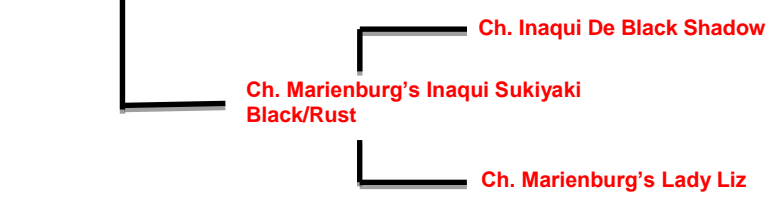
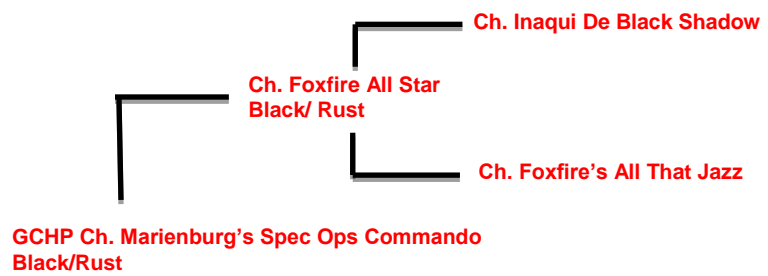
GCHP Ch. Marienburg's Spec Ops Commando
 #8 Doberman in 2016 and #6 Doberman in 2015



Monica Grainger-Blue
 PO Box 1653
 Hamilton, MT 59840
 406-363-5654
 crestline@montana.com
 crestline.montana.com



Am. Ch. Crestline's Scarlet O'Hara



AM/ARG Ch. Nello's Lex Luther WAC

Cindy De Black Shadow

Ch. Cambria's Highly Regarded

Ch. Foxfire's Take That

AM/ARG Ch. Nello's Lex Luther WAC

Cindy De Black Shadow

Ch. Marienburg's Born to Run

Ch. Marienburg's Amber Afterglow

Am. Ch. Jenter's Chazzo-Ma-Tazz

Can. Ch. Sudahr Color My Holiday At Skylocke

AM/CAN Ch. Int. Ch. Adlerheim's Beaujest V Skylocke

Bel-Mar's Mishore Qari V Skylocke

Am. Ch. BIS. BISS. Marienburg's Repo Man

Can. Ch. Marienburg's Fair Trade

Can. Ch. Crestline's Ticket To Ride

Can. Ch. Marienburg's Fair Trade